

Exploded Views

Door assembly

Figure 9-1 is an exploded view of the door assembly. Table 9-1 is a list of the associated part numbers.

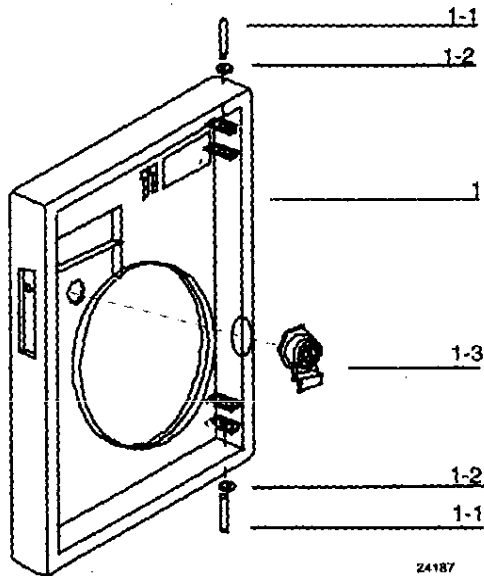


Figure 9-1 Door Assembly

Table 9-1 Door Assembly Parts

Key	Part Number	Description
1	51309609-501 51309609-502 51309609-506	Door Assembly (includes components for all door variations) Gray Door Blue Door Black Door
1-1	(K)30756409-002	Hinge Pin*
1-2	(K)30756409-002	Retaining Ring*
1-3	51309609-503 30757307-503	Latch/Lock Assembly Kit* Key Only for Lock Assembly*
	51198139-501	Graphic Overlay for Door* (not shown)

*Parts included with applicable door assembly.
(K) denotes that the part number is for the parts kit in which the described part is included. The described part cannot be ordered separately.

Chart plate

Figure 9-2 is an exploded view of the chart plate assembly. Table 9-2 is a list of the associated part numbers.

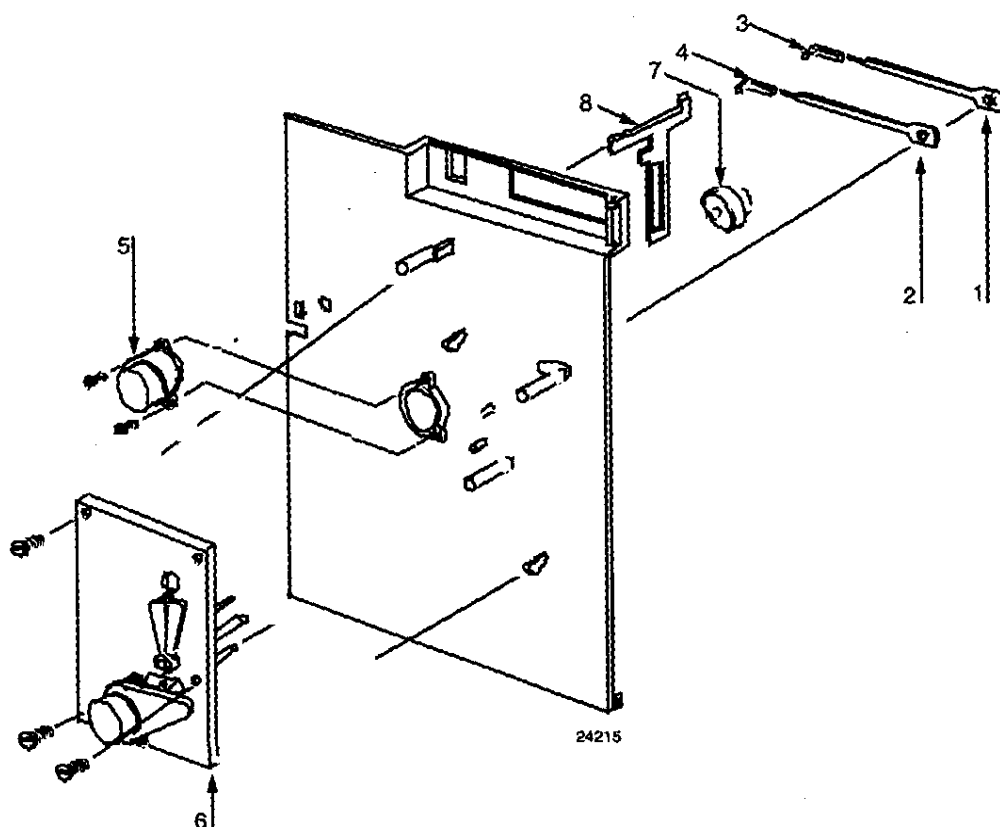


Figure 9-2 Chart Plate Assembly

Table 9-2 Chart Plate Assembly Parts

Key	Part Number	Description
1	(K)30756409-002	No. 1 Pen Arm
2	(K)30756409-002	No. 2 Pen Arm (2-pen model only)
3	30735489-007	No. 1 Purple Pen Cartridge (six pack)
4	30735489-002	No. 2 Red Pen Cartridge (six pack)
5	30756113-501	Chart Motor
6	30755833-501 30755833-502	Servo Plate Assembly 1-pen model 2-pen model
7	(K)30756150-501	Chart Hub Kit
8	(K)30756409-002	Pen Lifter Retainer

(K) denotes that the part number is for the parts kit in which the described part is included. The described part cannot be ordered separately.

**Basic recorder
components without
options**

Figure 8-3

Basic Recorder Components Without Options

Figure 8-3 is an exploded view of the Basic Recorder components without options.

Table 8-3 is a list of the associated part numbers.

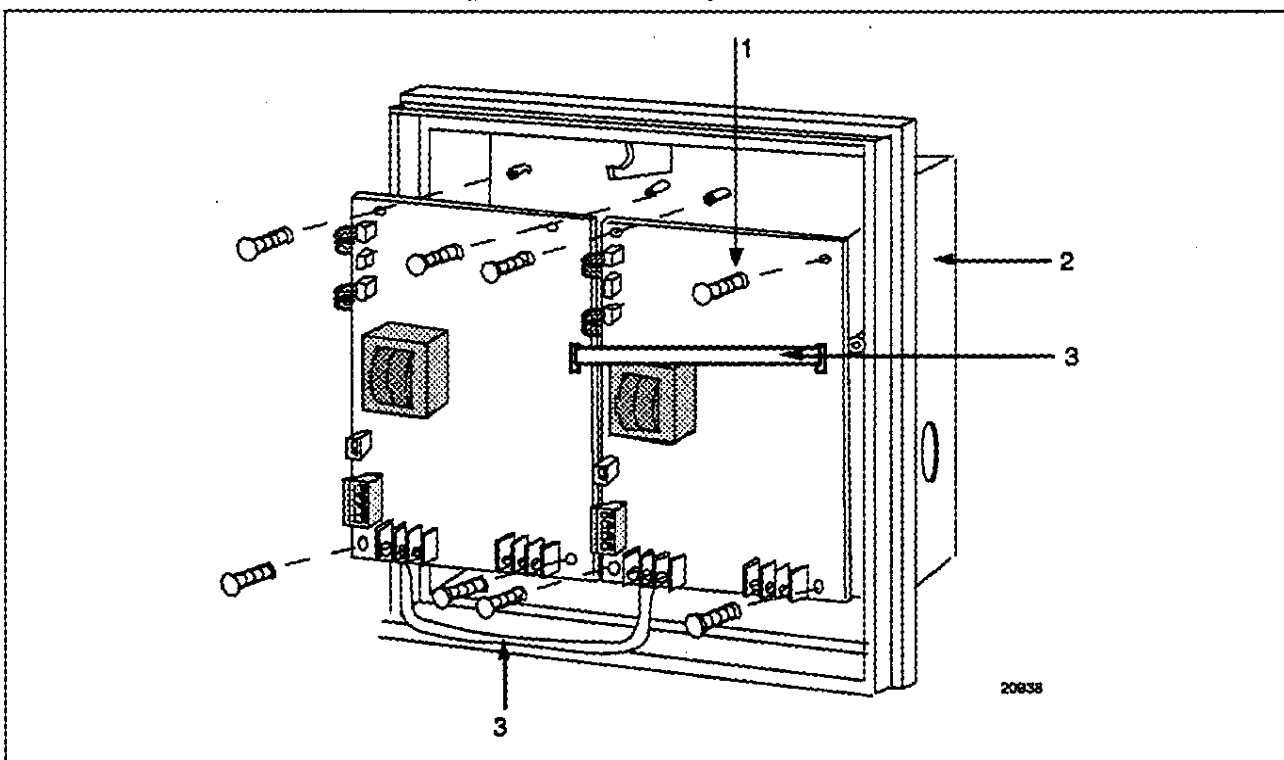


Table 8-3 Basic Recorder Parts without Options

Key	Part Number	Description
1	30756081-501	Main PCB - <i>with totalizer option</i>
	51309339-501	Main PCB- <i>with totalizer option - with CE Mark option</i>
	30756906-002	<i>Mark option</i> Totalizer Upgrade kit (not shown)
2	30755800-501	Case
	30755800-502	Case - CE Mark option
3	30757235-001	Cable Replacement Kit
	51197653-002	Cable Replacement Kit - CE Mark option
	30756084-501	Display and keyboard PCB (not shown)
	51197612-502	Round cable suppression cores (CE Mark), package of 2 (not shown)
	51197612-508	Round cable suppression cores (CE Mark), package of 8 (not shown)

Continued on next page

Additional recorder components associated with options

Figure 8-4 is an exploded view of the Recorder components associated with options.

Table 8-4 is a list of the associated part numbers.

Figure 8-4 Recorder Components Associated With Options

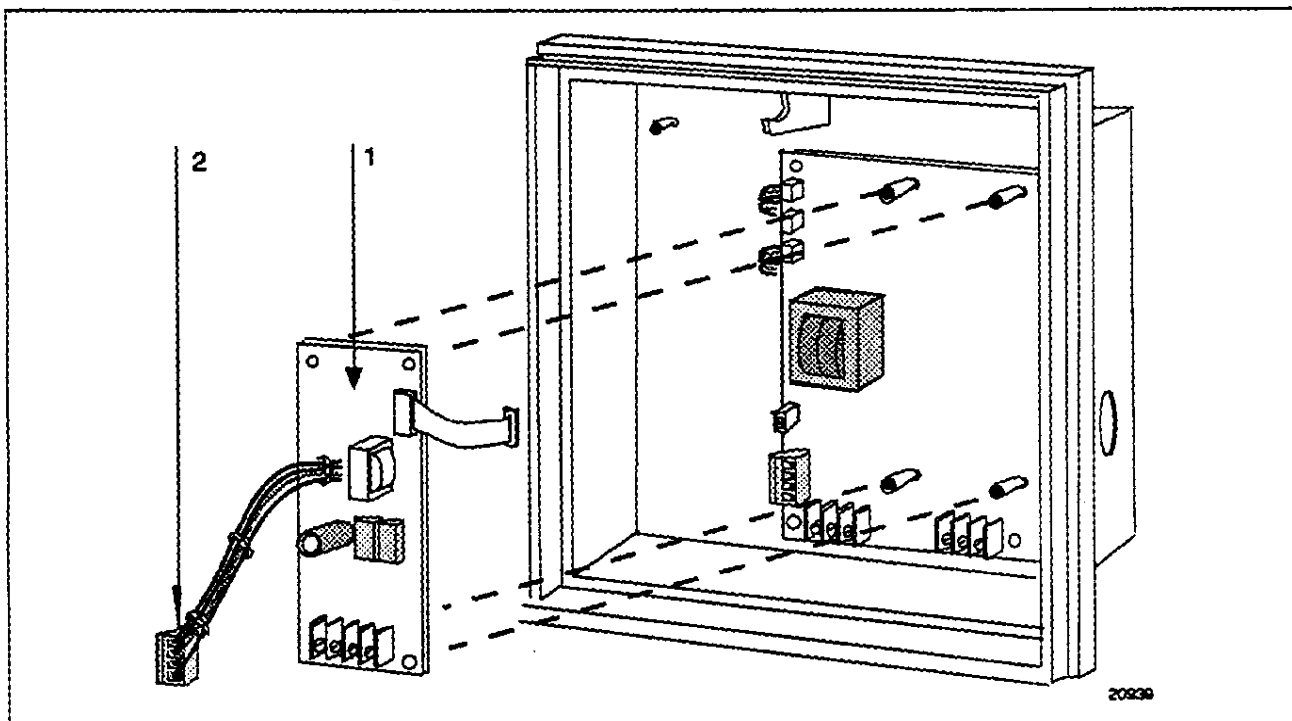


Table 8-4 Recorder Parts Associated With Options

Key	Part Number	Description
1	30756087-501	Current/relay Control Output PCB assembly (includes four stand-offs)
2	(K) 30755980-003	Four-position connector

(K) denotes that the part number is for the parts kit in which the described part is included. The described part cannot be ordered separately.